

## **APPENDIX 6A – Noise Zones**

In support of Policy 6-9: Noise Zones, Appendix 6A includes the following attached documents:

1. Noise Zones Guidelines brochure (includes descriptions of each of the 3 zones)
2. Maps showing locations of noise zones for the Main Library's first and second floors.

Note: Only changes to the above items that affect assignment of noise zones will require approval from the Board of Library Trustees.

(Appendix referenced in Policy 6. Approved by PPLD Board of Trustees January 12, 2011, Last Revised 5-11-16, Effective 6-1-16)

## Why Have Noise Zones?

Everyone who visits the Palatine Public Library District deserves a great place to read, work and socialize.

In an effort to better serve our patrons, the Main Library is designating zones which permit different noise levels and activities.

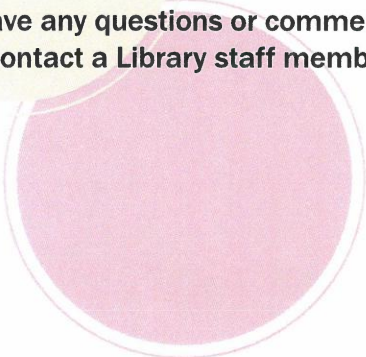
## Please Remember

The Library is here for everyone.

All visitors have the right to read, work and socialize at the Palatine Public Library District without unnecessary disturbance or distraction. Respecting the rights of others is a priority.

Choose the zone that is appropriate for your needs and please be considerate of others around you.

If you have any questions or comments please contact a Library staff member.



[www.palatinelibrary.org](http://www.palatinelibrary.org)

<b>Main Library</b> 700 N. North Court Palatine, IL 60067 847-358-5881 Mon-Thu 9-9 Fri 9-6 Sat 9-5 Sun Noon-5	<b>Rand Road Branch</b> 1585 Rand Road Palatine, IL 60074 847-202-1194 Mon & Thurs 10-6 Tues & Wed 9-6 Fri 9-4 Sat 9-1 Sun closed	<b>North Hoffman Branch</b> 3600 Lexington Drive Hoffman Estates, IL 60192 847-285-5440 Mon-Fri 11-7 Sat 9-3 Sun closed
--	---	---

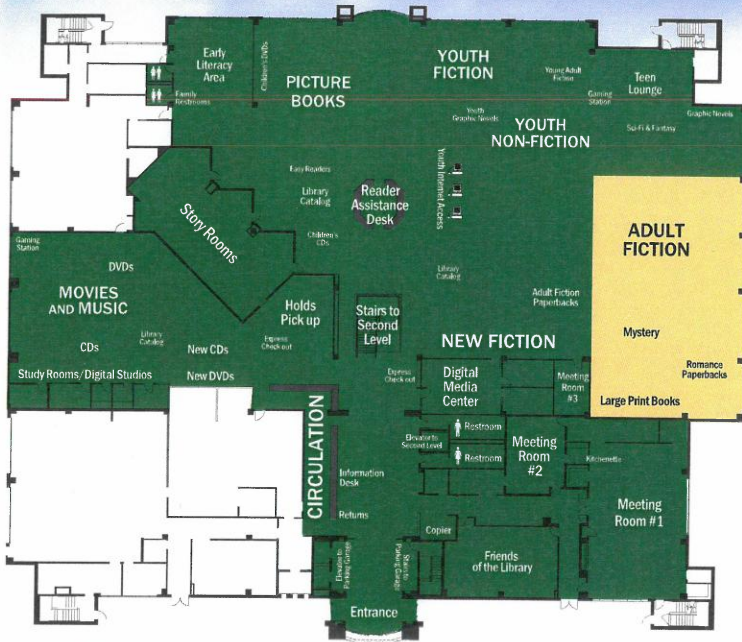


# Choose Your Zone

## Noise Zones Guidelines



# Choose your Noise Zone



1st Floor Noise Zones

The 1st Floor has designated areas for Social and Moderate Noise Levels.



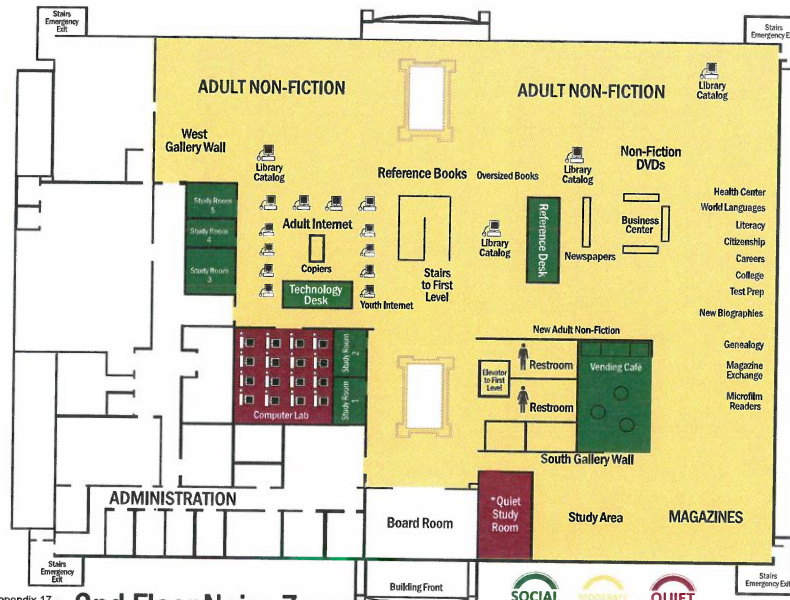
The **Social/Green Zone** is designated for those who wish to talk openly yet in a manner considerate of others.

- Audible and frequent conversations
- Considerate cell phone use
- No music noticeable to others
- Active patron area



The **Moderate/Yellow Zone** is designated for those who wish to work or read with a minimal disturbance.

- Minimal, brief & low-volume conversations
- No music noticeable to others
- Considerate cell phone use



2nd Floor Noise Zones  
2nd Floor Noise Zones

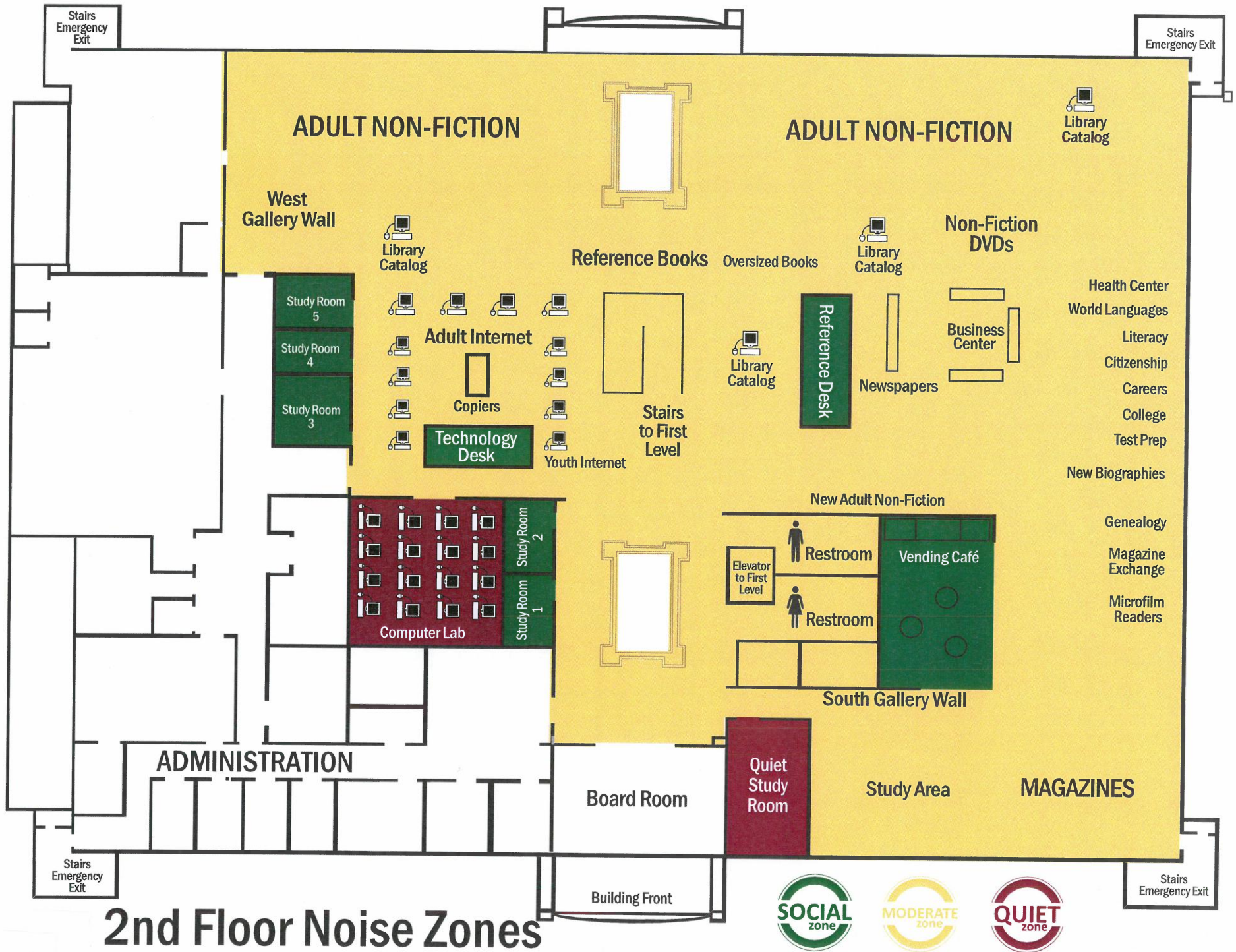
The 2nd Floor has designated areas for Social, Moderate and Quiet Noise Levels.



The **Quiet/Red Zone** is designated for those who wish to work or read with virtually no disturbance.

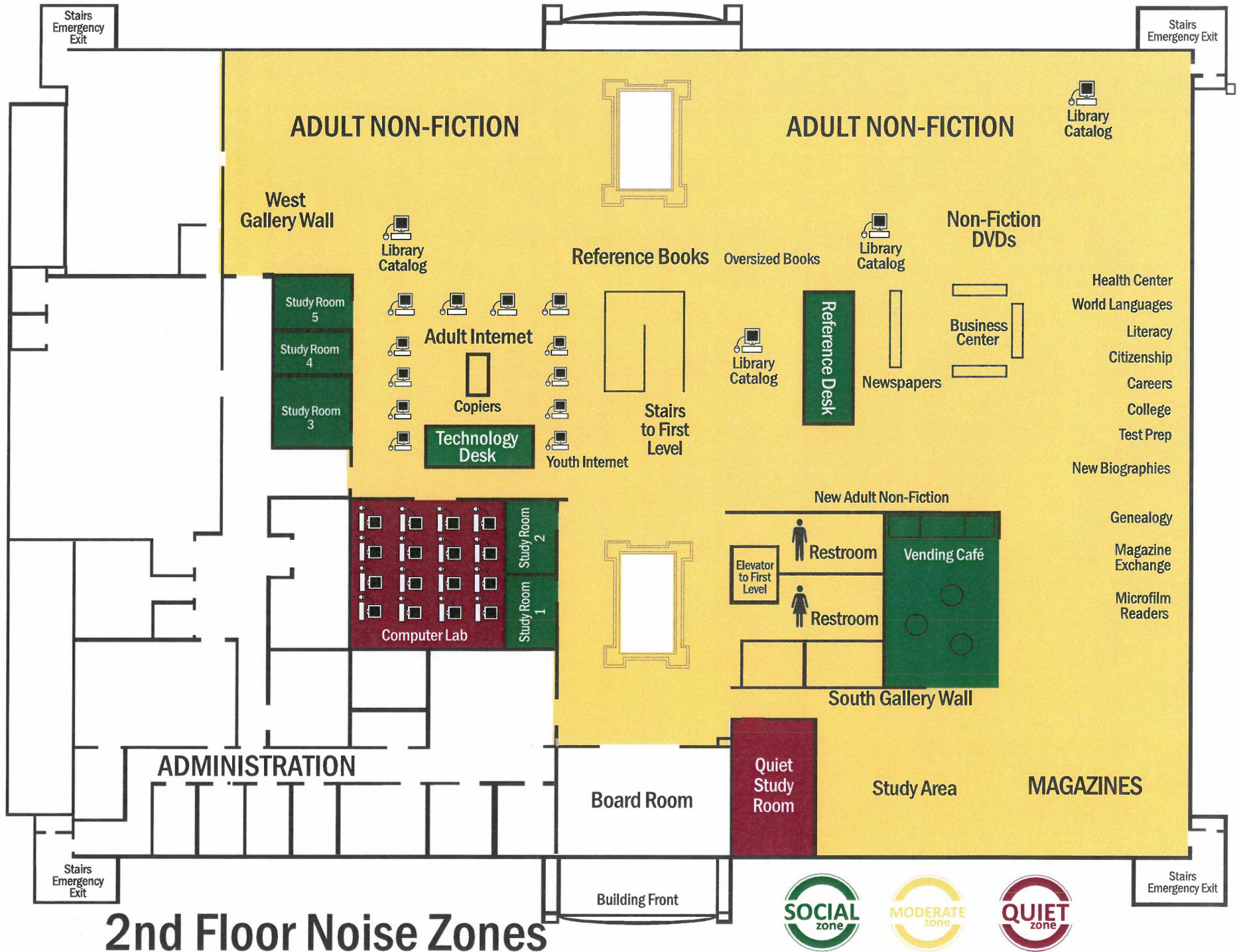
- No conversation
- No music noticeable to others
- No cell phone use

Note - \*Quiet Study Room excludes laptops.



# 2nd Floor Noise Zones





# 2nd Floor Noise Zones

