



DIRECTOR'S MONTHLY REPORT

FEBRUARY 2020

ACTIVITIES

The theme of our half-day Staff Development Day on February 21 was safety. Speakers from Serve and Protect walked us through how to handle active shooter scenarios, followed by an **active shooter drill**. Staff then had the option of a breakout session on **desk exercise, Microsoft Teams, meditation, painting, or calendars and time management**. We wrapped up with a **fire drill** and lunch before opening all three locations at 2:00 pm. The active shooter training was particularly well-received.

Managers completed goal-setting discussions with staff. All staff were given the opportunity to serve on a project team for the strategic plan. This year's action steps were included in a previous board packet.

EXTERNAL MEETINGS

- Rotary Club, 2/4 and 2/11
- Harper College President Meet & Greet, 2/6
- POC Board Development Committee, 2/11
- ILA Legislative Breakfast, 2/17
- Hoffman Estates Chamber WEB Meeting, 2/17
- Palatine State of the Village Address, 2/19
- Foundation Meeting, 2/24
- PLA Conference, 2/26-2/29

UPCOMING EVENTS

MARCH 2020

March 14 St. Patrick's Day Parade, 10:00 am

APRIL 2020

April 2 Policy Committee, 9:00 am
April 2 Building Renovation Committee, 3:30 pm
April 21 Finance Committee, 6:00 pm
April 24 Volunteer Appreciation Luncheon, 11:30 am

Jeannie Dilger

Monthly Door Counts

Main Library

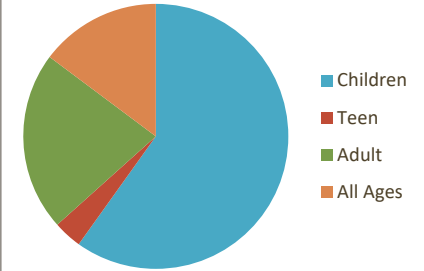
Feb 2020

	9a	10a	11a	12p	1p	2p	3p	4p	5p	6p	7p	8p	TOTAL
Su				1060	835	751	515	446					3607
Mo	356	402	371	342	407	404	410	515	428	568	335	132	4670
Tu	587	348	290	349	357	385	404	459	475	590	319	129	4692
We	321	348	298	306	353	324	390	378	384	625	263	100	4090
Th	363	286	262	276	256	283	313	379	452	560	285	115	3830
Fr	327	274	232	242	245	445	400	420	422				3007
Sa	740	880	776	828	971	818	790	578					6381
TOTAL	2694	2538	2229	3403	3424	3410	3222	3175	2161	2343	1202	476	30277

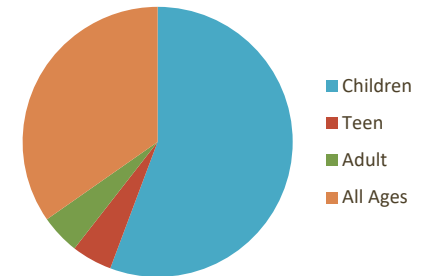
Programs 2019-20

	JUL	AUG	SEP	OCT	NOV	DEC	JAN	Fiscal YTD	Last Fiscal YTD	% Change
PROGRAMS										
<u># Programs</u>										
Children	63	51	50	79	58	56	53	410	442	-7%
Teen	5	3	4	14	7	7	4	44	32	38%
Adult	38	37	42	39	30	22	34	266	223	19%
All Ages	5	5	3	5	4	2	4	28	25	12%
<u>Attendance</u>										
Children	1,738	1,643	1,549	3,653	1,751	2,178	1,986	14,498	15,466	-6%
Teen	34	36	72	333	66	240	62	843	540	56%
Adult	533	659	1,024	820	653	325	710	5,284	3,810	39%
All Ages	118	404	38	890	1,902	31	197	3,580	920	289%
PASSIVE PROGRAMS										
<u># Programs</u>										
Children	20	14	6	9	9	8	10	76	71	7%
Teen	0	0	0	0	0	1	0	1	1	0%
Adult	0	0	0	0	0	0	0	0	4	-100%
All Ages	1	2	4	6	4	5	5	31	0	#DIV/0!
<u>Attendance</u>										
Children	1,206	343	204	283	249	266	327	2,878	3,183	-10%
Teen	0	0	0	0	0	250	0	250	250	0%
Adult	31	31	30	31	30	31	31	244	294	-17%
All Ages	0	0	0	1,794	0	0	0	1,794	0	#DIV/0!
TOTAL # PROGRAMS	127	112	107	148	112	101	110	856	798	7%
TOTAL PROG ATTEND	3,660	3,116	2,917	7,804	4,651	3,321	3,313	29,371	24,463	20%
AVERAGE ATTEND/PROG	28.8	27.8	27.3	52.7	41.5	32.9	30.1	34.3	30.7	12%

Program Attendance



Passive Attendance



CIRCULATION STATS 2019-20

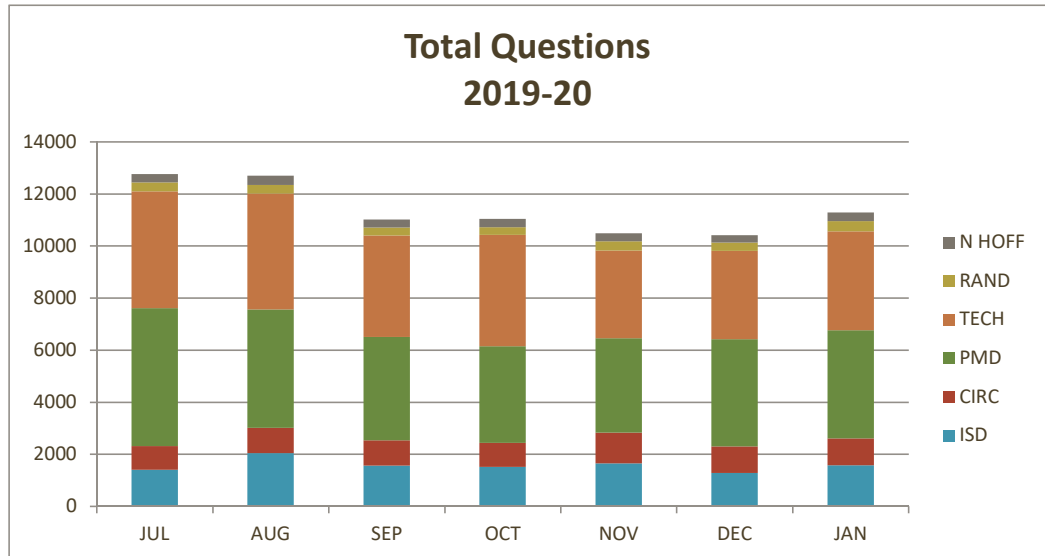
	JUL	AUG	SEP	OCT	NOV	DEC	JAN	FEB	Fiscal YTD	Last Fiscal YTD	% Change
Main											
Juvenile Print	46,983	42,360	40,979	40,498	38,516	35,352	38,168	36,899	319,755	263,413	21%
*Juvenile Non-Print	7,796	5,942	4,898	5,383	5,682	5,461	5,491	4,983	45,636	42,995	6%
Total Juvenile	54,779	48,302	45,877	45,881	44,198	40,813	43,659	41,882	365,391	306,408	19%
Total Young Adult	4,489	3,815	2,877	2,756	2,617	2,718	2,821	2,624	24,717	21,818	13%
Adult Print	30,425	28,146	26,319	25,917	24,454	24,328	27,106	24,946	211,641	183,482	15%
*Adult Non-Print	28,106	22,428	19,677	20,662	21,065	21,603	22,187	21,023	176,751	185,187	-5%
Total Adult	58,531	50,574	45,996	46,579	45,519	45,931	49,293	45,969	388,392	368,669	5%
TOTAL MAIN LIBRARY	117,799	102,691	94,750	95,216	92,334	89,462	95,773	90,475	778,500	696,895	12%
North Hoffman											
Juvenile Print	2,494	2,323	2,518	3,179	2,857	2,401	2,505	2,665	20,942	17,789	18%
*Juvenile Non-Print	627	460	536	578	514	477	554	423	4,169	4,156	0%
Total Juvenile	3,121	2,783	3,054	3,757	3,371	2,878	3,059	3,088	25,111	21,945	14%
Total Young Adult	115	113	74	88	69	57	53	72	641	668	-4%
Adult Print	492	415	370	426	353	335	448	402	3,241	3,613	-10%
*Adult Non-Print	1,233	970	886	928	895	1,051	1,185	1,034	8,182	9,052	-10%
Total Adult	1,725	1,385	1,256	1,354	1,248	1,386	1,633	1,436	11,423	12,665	-10%
TOTAL N. HOFFMAN	4,961	4,281	4,384	5,199	4,688	4,321	4,745	4,596	37,175	35,278	5%
Rand Road											
Juvenile Print	1,381	872	891	1,111	1,009	1,066	1,076	1,076	8,482	6,431	32%
*Juvenile Non-Print	684	414	306	375	414	446	406	385	3,430	2,584	33%
Total Juvenile	2,065	1,286	1,197	1,486	1,423	1,512	1,482	1,461	11,912	9,015	32%
Total Young Adult	62	58	33	55	23	34	34	22	321	288	11%
Adult Print	214	183	157	177	147	141	158	134	1,311	1,036	27%
*Adult Non-Print	1,220	870	782	731	805	850	795	781	6,834	7,079	-3%
Total Adult	1,434	1,053	939	908	952	991	953	915	8,145	8,115	0%
TOTAL RAND ROAD	3,561	2,397	2,169	2,449	2,398	2,537	2,469	2,398	20,378	17,418	17%
Digital Collections											
Overdrive	9,066	8,770	8,527	8,821	8,069	8,150	9,288	8,730	69,421	66,346	5%
hoopla	2,333	2,301	2,128	2,110	2,051	2,118	2,298	2,257	17,596	16,437	7%
Kanopy	237	607	748	521	533	486	807	700	4,639	0	N/A
TOTAL DIGITAL	11,636	11,678	11,403	11,452	10,653	10,754	12,393	11,687	91,656	82,783	11%
CIRC. OF MATERIALS											
Electronic Info Retrieval	137,957	121,047	112,706	114,316	110,073	107,074	115,380	109,156	927,709	832,374	11%
	1,231	1,896	1,736	2,245	2,032	1,564	1,745		12,449	13,803	-10%
TOTAL CIRCULATION	139,188	122,943	114,442	116,561	112,105	108,638	117,125	109,156	940,158	846,177	11%

CIRCULATION STATS 2019-20

	JUL	AUG	SEP	OCT	NOV	DEC	JAN	FEB	Fiscal YTD	Last Fiscal YTD	% Change
<u>Express Checkout</u>											
# of Items	21,855	20,899	17,513	16,998	17,711	16,250	17,978	15,565	144,769	145,868	-1%
% of Total Checkouts	16%	17%	16%	15%	16%	15%	16%	14%	16%		
<u>Reciprocal Borrowing</u>											
Books Loaned	4,275	4,310	4,357	4,846	4,265	4,004	4,548	4,667	35,272	36,965	-5%
<u>Library Card Registration</u>											
Card Activity											Monthly Average
New PPLD Cards	437	442	382	321	337	245	327	269	2,760	3,006	345
New RBP's	67	66	60	52	45	30	60	45	425	495	53
Renewals (PPLD/RBP)	465	595	583	502	725	535	641	682	4,728	3,188	591
Non-Resident Cards										0	
Renewals Non-Resident	5	5	1	6	4	7	15	0	43	43	5
New Non-Resident				2	5	0	0	0	7	9	0
TOTAL ACTIVITY:	974	1,108	1,026	883	1,116	817	1,043	996	7,963	6,741	1036
Card Registrations											
PPLD Cards	58,396	58,750	59,116	59,445	59,743	59,636	59,952	60,194			59,404
Non-Resident Fee Cards	165	160	160	159	162	162	161	160			161
Reciprocal	5,876	5,992	6,040	6,096	6,133	6,150	6,209	6,251			6,093
ILL	99	99	99	99	99	99	99	99			99
TOTAL REG. PATRONS	64,536	65,001	65,415	65,799	66,137	66,047	66,421	66,704			65,758
<u>Collection Summary</u>											
Database Titles	274,659	274,153	274,363	274,387	275,501	274,536	274,652	268,951			273,900
All Items (Print, AV & Mags)	268,797	267,745	269,209	270,028	269,664	267,279	266,032	259,986			267,343
<u>Door Count</u>											
MAIN	35,650	32,492	28,601	32,697	30,448	27,329	29,528	29,543	246,288	261,539	-6%
NHB	3,238	2,899	2,446	3,361	2,676	2,246	2,972	2,932	22,770	22,191	3%
RRB	3,697	3,408	2,664	3,367	3,130	2,774	3,270	2,866	25,176	25,032	1%
TOTAL	42,585	38,799	33,711	39,425	36,254	32,349	35,770	35,341	294,234	308,762	-5%
<u>SUMMARIES BY TYPE</u>											
Juvenile Print	50,858	45,555	44,388	44,788	42,382	38,819	41,749	40,640	349,179	287,633	21%
Juvenile Nonprint	9,107	6,816	5,740	6,336	6,610	6,384	6,451	5,791	53,235	49,735	7%
Teen	4,666	3,986	2,984	2,899	2,709	2,809	2,908	2,718	25,679	22,774	13%
Adult Print	31,131	28,744	26,846	26,520	24,954	24,804	27,712	25,482	216,193	188,131	15%
Adult Nonprint	30,559	24,268	21,345	22,321	22,765	23,504	24,167	22,838	191,767	201,318	-5%
E-Resource	11,636	11,678	11,403	11,452	10,653	10,754	12,393	11,687	91,656	82,783	11%
Database Use	1,231	1,896	1,736	2,245	2,032	1,564	1,745	1,605	14,054	13,803	2%
TOTAL	139,188	122,943	114,442	116,561	112,105	108,638	117,125	110,761	941,763	846,177	11%

Reference Statistics 2019-20

		<u>JUL</u>	<u>AUG</u>	<u>SEP</u>	<u>OCT</u>	<u>NOV</u>	<u>DEC</u>	<u>JAN</u>	<u>TOTAL</u>	<u>Last YTD</u>	<u>% Change</u>
ISD	Ref/RA	1400	2045	1559	1509	1650	1276	1573	12956	11502	12.6%
	Directional	223	246	225	208	225	228	249	1874	1855	1.0%
	Email	81	77	77	80	96	68	120	658	594	10.8%
	Chat	135	134	92	69	71	83	100	770	0	
CIRC	Ref/RA	915	961	967	928	1182	1028	1037	7839	5591	40.2%
	Directional	726	921	855	832	1069	951	1104	7336	4701	56.1%
PMD	Ref/RA	5293	4553	3979	3711	3622	4107	4147	29412	31886	-7.8%
	Directional	155	156	127	162	130	260	148	1138	1319	-13.7%
TECH	Ref/RA	4482	4454	3899	4277	3370	3399	3807	27688	32311	-14.3%
	Directional	132	115	94	169	111	92	97	810	809	0.1%
RAND	Ref/RA	347	332	308	288	355	318	391	2339	2348	-0.4%
	Directional	105	139	115	163	147	3	140	812	1027	-20.9%
N HOFF	Ref/RA	318	348	298	323	308	281	329	2205	2549	-13.5%
	Directional	370	320	220	364	297	250	296	2117	2099	0.9%
<hr/>											
TOTALS											
	Ref/RA	12755	12693	11010	11036	10487	10409	11284	82439	86187	-4.3%
	Directional	1711	1897	1636	1898	1979	1784	2034	14087	11810	19.3%
	Email/Chat	81	77	77	80	96	68	120	658	594	10.8%
GRAND TOTAL		14547	14667	12723	13014	12562	12261	13438	97184	98591	-1.4%



VOLUNTEER STATISTICS

FY2019-20

	JUL	AUG	SEP	OCT	NOV	DEC	JAN	TOTAL
Adult Volunteer Hours	149.00	158.00	211.25	245.75	202.00	178.50	193.00	1,337.50
TAB Hours			58.50	63.00	123.75	69.25	67.00	381.50
Summer Reading Hours	308.75	79.00						387.75
TOTAL HOURS	457.75	237.00	269.75	308.75	325.75	247.75	260.00	2,106.75
Adult Volunteer Sessions	79	89	115	131	111	99	112	736
TAB Sessions	0	0	36	39	60	47	41	223
Summer Reading Sessions	191	37	0	0	0	0	0	228
TOTAL SESSIONS	270	126	151	170	171	146	153	1187
Adult Volunteers	30	35	43	43	44	39	38	44
TAB volunteers	0	0	30	29	34	34	30	34
Summer Reading Volunteers	72	28	0	0	0	0	0	72
TOTAL VOLUNTEERS	102	63	73	72	78	73	68	150

Maximum
44
34
72
150

STRATEGIC PLAN FEBRUARY 2020 UPDATE



1 Experience: We strive to ensure that individuals have exceptional interactions with the library and are connected with resources and services that increase their quality of life. We exceed expectations.

1.1: The library has comfortable, flexible spaces that encourage use and connection.

Renovation Team met to discuss flooring plan and options.

Renovation Team toured Harper College's Maker Space.

1.2: The library's collection is vibrant and convenient to access.

ILS Team Completed profiling documents and submitted them to CCS.

At each Departmental monthly meeting (including Branches), our ILS team members gave a presentation on CCS.

Added new items to Library of Things materials; including a new telescope which is more user-friendly.

Weeding began in preparation of renovation and migration to CCS.

A new Popular Pick display shelf is in the lobby, which includes Pop Pick Blu-rays and DVDs.

1.3: The library is committed to quality patron interactions.

Experience Team completed Code of Conduct and it was presented to staff and board.

A new team was formed to study ways to offer de-escalation training to staff.



2 Engagement: We work continuously with the community to increase our reach and expand our impact. We are a valued community partner.

2.1: The community has high awareness of library services and programs.

CCS Team met with all library departments to communicate updates coming as part of the ILS Migration.

2.2: The library interacts with its diverse community to discover and respond to current needs of all groups.

Circulation/Rand Branch hired new Spanish bilingual employee to fill vacancy that opened through staff turnover.

2.3: The library creates and deepens meaningful partnerships with local organizations and businesses.

Communications department created a business sponsorship package program that includes our three major sponsorship opportunities: Summer Reading, Winter Reading, and Show Your Card.

ISD Staff presented Census information to UP Coalition.

Staff attended census training and implemented a computer guest pass system to make the online census form more accessible to the community.



3 Endurance: We strive for sustainability in our practices, human and financial resources, and facilities. We are a resilient organization.

3.1: The library is a trusted steward of resources.

Used OpenGov software to hold digital Town Hall meetings in December and January to gather patron feedback on renovation plans. Began posting interactive financial and usage statistics on website through OpenGov software.

3.2: The library is a preferred employer that values staff development and retention.

We are now pulling a winner each month from those who have received a “Bookmarks of Appreciation” and awarding a small prize, donated by the Friends, during our new Weekly Update.

Beginning in 2020, we will now recognize milestone anniversaries each month by posting some fun facts about the employee in our staff e-news and on our Intranet instead of waiting until our Staff Development Day to announce to staff.

Managers and employees participated in goal discussions. Employees were given opportunities to sign up for strategic plan items that would advance their new goals.

New Substitute position was created and posted.

Information Services Department began training on Adult Services functions that currently reside in the Popular Materials Department including readers advisory and homebound services.

Provided active shooter/workplace violence training at our February Staff Development Day. Included a presentation by consultants “Serve and Protect” with a lockdown drill. The Palatine Police were also present to observe the drill and provide additional insights.

3.3: The library's systems and facilities are resilient, modern, and efficient.

Reviewed and updated firewall policies and configurations.

Tested new wireless access points in anticipation of Wi-Fi upgrades.

Received and approved quote for proposed new data backup system.

Technology and Communications staff held first meeting to discuss building a new intranet or intranet alternative.

Daily Herald

February 13, 2020

Harry Potter Reading Night: 6-8 p.m. Thursday, Feb. 13, Palatine Public Library, 700 N. North Court, Palatine. Celebrate Harry Potter Reading Night with crafts, games and magical creatures. All ages; drop in. For details, call (847) 358-5881, ext. 132, or visit palatinelibrary.org.

Used Book Sale: 6-9 p.m. Friday, Feb. 14 (free for members, nonmembers \$5); 9:30 a.m.-3 p.m. Saturday, Feb. 15; 12:30-3 p.m. Sunday, Feb. 16 (bargain day; half-price), Palatine Public Library, 700 N. North Court, Palatine. Books, CDs, DVDs and related material. All proceeds benefit the library. For more information, visit www.palatinelibrary.org.

February 27, 2020

Fit4Mom Presents Stroller Strides: 10-11 a.m. Monday, March 2, Palatine Public Library, 700 N. North Court, Palatine. Stroller Strides weaves songs and activities into a routine designed to entertain and engage baby, while moms are led through a series of exercises using their strollers. This special "Story Strides" edition also

February 25, 2020

ESL Conversation Club: 9:30-11 a.m. Tuesday, Feb. 25, Palatine Public Library, 700 N. North Court, Palatine. Practice your English conversational skills with friendly volunteers over tea and coffee. Basic conversation skills recommended. Drop in. Call (847) 358-5881, ext. 167, or visit palatinelibrary.org.

'A Father's Sacrifice, a War Hero, and the Naming of an Airport': 7-8:30 p.m. Tuesday, Feb. 25, Palatine Public Library, 700 N. North Court, Palatine. Author Richard Lindberg presents how O'Hare Field was named for Naval Aviator Edward "Butch" O'Hare and the story of his father's affiliation with Al Capone and the mob. To sign up, call (847) 358-5881, ext. 167, or visit palatinelibrary.org.

March 2, 2020

'Go Tell It On the Mountain': Palatine Public Library will feature "Go Tell It On the Mountain" by James Baldwin for the next adult book discussion set from 7 to 8:30 p.m. Monday, March 16. The book is the story of John Grimes, an intelligent teenager living in the Harlem section of New York in 1930s and his relationship to his family and church. Copies are available at the library. To sign up for the free program, call (847) 358-5881, ext. 132, or visit palatinelibrary.org. The library is at 700 N. North Court.

February 26, 2020

Power Employment Workshop: 9:30 a.m.-4 p.m. Thursday, Feb. 27, Palatine Public Library, 700 N. North Court, Palatine. Bring your lunch to this workshop from Illinois workNet. Discover how to set goals, use social media, get past applicant tracking systems and interview effectively to land the job. To sign up, visit worknetncc.com and click the link under "Events."

Office Hours from the Office of Sen. Ann Gillespie: 3-5 p.m. Monday, March 2, Palatine Public Library, 700 N. North Court, Palatine. Drop in to talk with a representative from state Sen. Ann Gillespie's office. Ask about the senator's positions on bills and issues or share your own opinions. Call (847) 358-5881, ext. 100, or visit palatinelibrary.org.

SCORE Entrepreneur Mentoring: 5-8 p.m. Tuesday, March 3, Palatine Public Library, 700 N. North Court, Palatine. Do you have a business question? SCORE's experienced business mentors provide advice on every aspect of business planning, start up, management and growth. To schedule an one-hour appointment, visit score.org/find-mentor. For information, call (847) 358-5881, ext. 167, or visit palatinelibrary.org.

Palatine library event March 2 explores 'The Irish in Hollywood'

 dailyherald.com/news/20200218/palatine-library-event-march-2-explores-the-irish-in-hollywood


February 18, 2020

Palatine Public Library District will have a senior program "The Irish in Hollywood" from 1 to 2 p.m. Monday, March 2.

Annette Bochenek, an avid scholar of Hollywood's Golden Age, will lead the free program and explore top stars and classic films that paid tribute to Ireland.

To sign up, call (847) 358-5881, ext. 132, or visit palatinelibrary.org. The library is at 700 N. North Court.

Photography exhibit about refugees coming to Palatine library

 dailyherald.com/news/20200220/photography-exhibit-about-refugees-coming-to-palatine-library

February 20, 2020

A poignant traveling photography exhibition will be on display at the Palatine Public Library District from March 2 through April 15.

"When Home Won't Let You Stay" is an exhibit about refugees in America by documentary artist James A. Bowey. Contemporary color portraits accompanied by first-person stories show the resilience of refugees in the country.

The images will be on the second floor of the main library at 700 N. North Court in Palatine. From 6:30 to 8:30 p.m. March 4, Bowey will be at the library to present photographs, stories and reflections from the exhibit along with leading a community conversation. The exhibit and program are funded by the private nonprofit Friends of Palatine Library.

March 3, 2020

Palatine Library hosts photo exhibit

Submitted by Palatine Public Library

Experience a traveling photography exhibition at Palatine Library District through Wednesday, April 15.

"When Home Won't Let You Stay" is an exhibit about refugees in America by documentary artist James A. Bowey. Contemporary color portraits, accompanied by first-person poetic stories, show the resilience of refugees in this country.

Visit the second floor of the Main Library to view these thought-provoking images.


On Wednesday, March 4, from 6:30 to

8:30 p.m., James A. Bowey presents photographs, stories and reflections from the exhibit, and leads a community conversation about our empathetic imagination for refugees.

This exhibit and program are funded by Friends of Palatine Library and located at the Main Library, 700 N. North Court, Palatine. Sign up at palatinelibrary.org or call (847) 358-5881, ext. 167.

• Submit 'Your News' at www.dailyherald.com/share.

Palatine Public Library event benefits Barb's Precious Rescue

 [dailyherald.com/submitted/20200225/palatine-public-library-event-benefits-barbs-precious-rescue](https://www.dailyherald.com/submitted/20200225/palatine-public-library-event-benefits-barbs-precious-rescue)

February 25, 2020



Bob Swanson (standing in for Neil Bruns) -- Warehouse Direct, Bridget Witt -- Palatine Bank & Trust, Barbara Weber -- Barb's Precious Rescue, Julie Selof -- Andigo Credit Union, Schaumburg, and Melissa Gardner -- Palatine Library. Andre Lubink

Barb's Precious Rescue, Palatine, wishes to express a huge heartfelt "Thank You" to the Palatine Public Library and the Palatine community of readers. With their help, the Library's goal of 7,000 books were read during this year's Winter Reading Challenge.

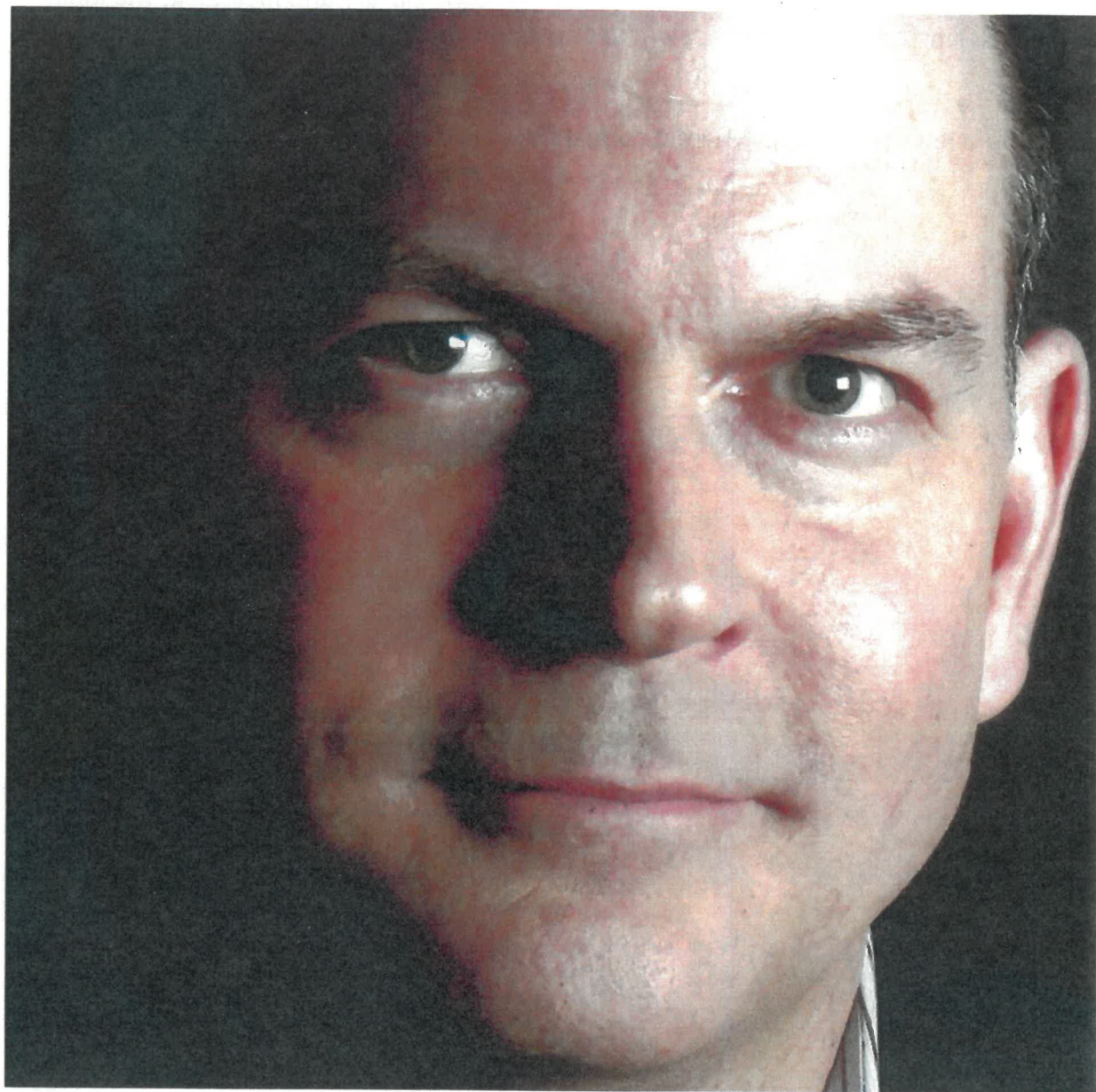
As a result of meeting that goal, several local businesses donated money to help support their Rescues. The proceeds included: \$1,000 -- Palatine Bank & Trust; \$1,000 -- Warehouse Direct; and \$500 -- Andigo Credit Union Schaumburg.

Barb's Precious Rescue and Adoption Center is a 501(c)(3) charitable organization, specializing in finding loving, forever homes for cats in need. They are located at 313 North Quentin Road, Palatine, Illinois 60067. Additional information may be found at www.barbsrescue.org. The phone number is 847-907-4881. Viewing and adoption hours are Monday and Wednesday evenings from 6:30 PM -- 8:30 PM, as well as Saturday mornings from 10 AM to 1 PM.

Palatine Library hosts new photography exhibit

dailyherald.com/submitted/20200228/palatine-library-hosts-new-photography-exhibit

February 28, 2020



James A. Bowey Courtesy of Palatine Public Library

Experience a traveling photography exhibition at Palatine Library District Monday, March 2, through Wednesday, April 15.

"When Home Won't Let You Stay" is an exhibit about refugees in America by documentary artist James A. Bowey. Contemporary color portraits, accompanied by first-person poetic stories, show the resilience of refugees in this country.

Visit the second floor of the Main Library to view these thought-provoking images.

On Wednesday, March 4, from 6:30 to 8:30 p.m., James A. Bowey presents photographs, stories and reflections from the exhibit, and leads a community conversation about our empathetic imagination for refugees.

This exhibit and program are funded by Friends of Palatine Library and located at the Main Library, 700 N. North Court, Palatine. Sign up at palatinelibrary.org or call (847) 358-5881, ext. 167.

Palatine Journal

Palatine Library Hosts Photography Exhibit On Refugees

JT journal-topics.com/articles/palatine-library-hosts-photography-exhibit-on-refugees/

By Journal Staff | on February 20, 2020

February 20, 2020

Experience a traveling photography exhibition at the Palatine Public Library, 700 N. North Ct., from Monday, March 2 through Wednesday, April 15.

"When Home Won't Let You Stay" is an exhibit about refugees in America by documentary artist James A. Bowey. Contemporary color portraits accompanied by first-person poetic stories show the resilience of refugees in this country. Visit the second floor of the library to view these images.

From 6:30 to 8:30 p.m. Wednesday, March 4, Bowey will present photographs, stories and reflections from the exhibit, and lead a community conversation about people's imagination for refugees.

This exhibit and program are funded by Friends of Palatine Library.